

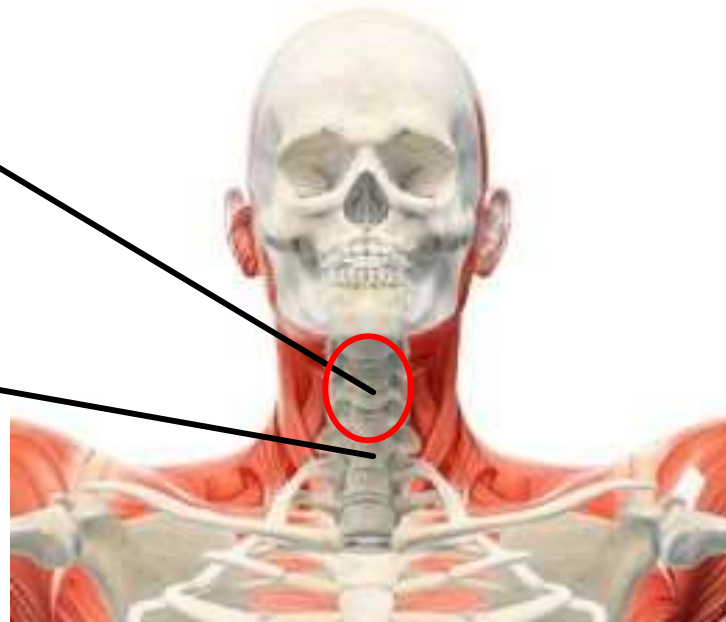


# Human Anatomy for Marshals

“The neck, including the larynx, cervical vertebrae, and first thoracic vertebra”



“The neck,  
including the  
larynx,  
cervical  
vertebrae,  
and first  
thoracic  
vertebra”



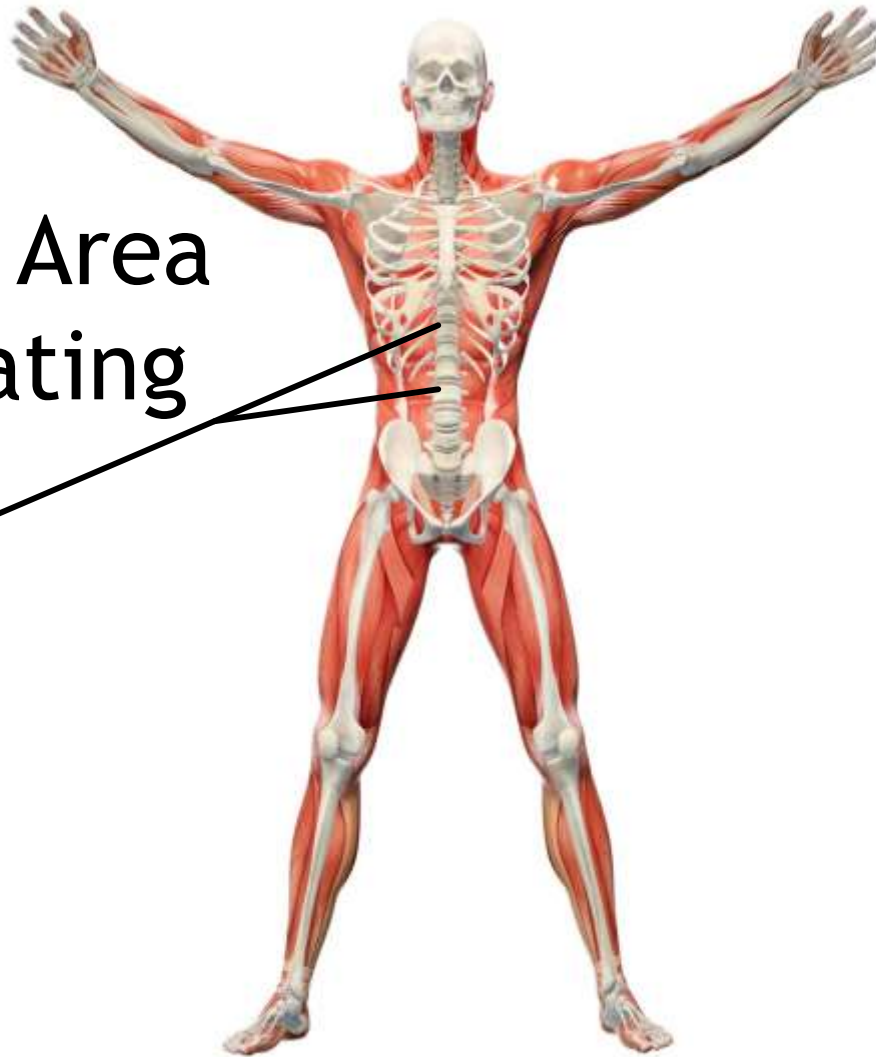


The cervical vertebrae start tucked into the base of the skull. The dorsal process of the first thoracic vertebrae is the palpable lump just above the shoulder blades.

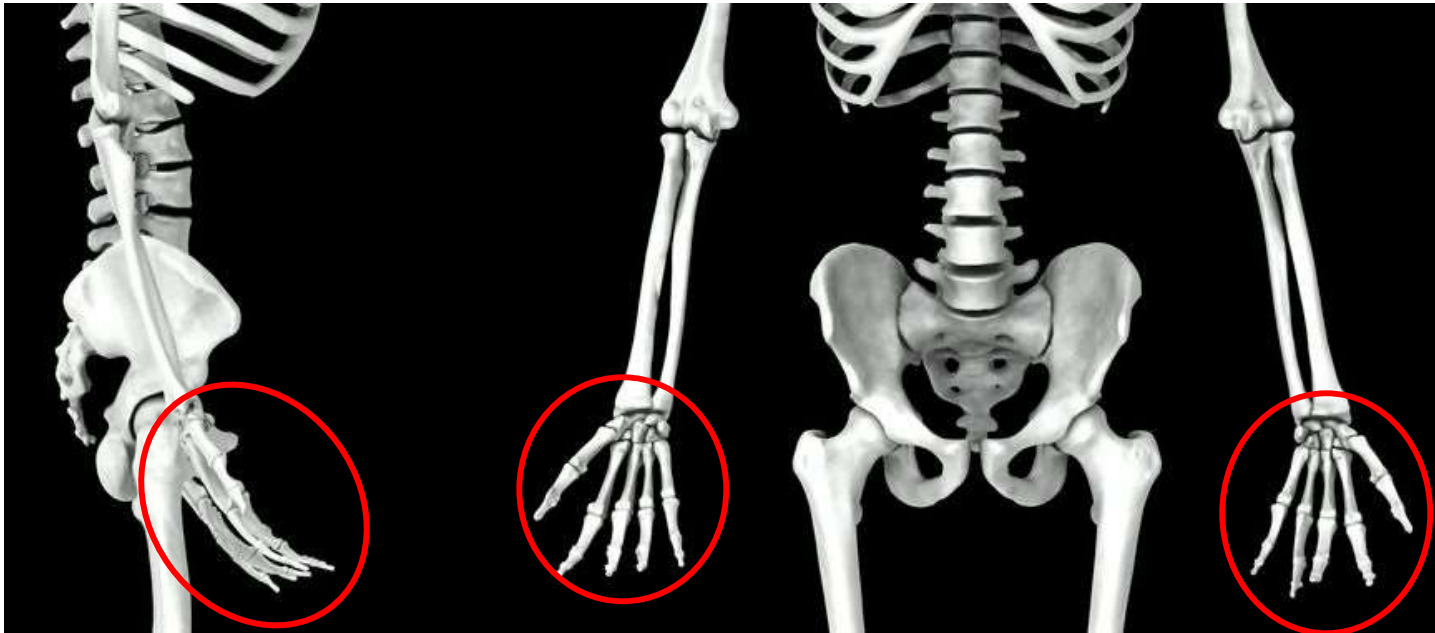
The Adam's Apple is the bulging portion of the larynx. Place the fingers lightly on either side of the trachea and ask the subject to swallow to feel the larynx.



“Kidney Area  
and Floating  
Ribs”



“The outer surfaces of the hand, to one inch above the wrist of both arms and including the thumb”

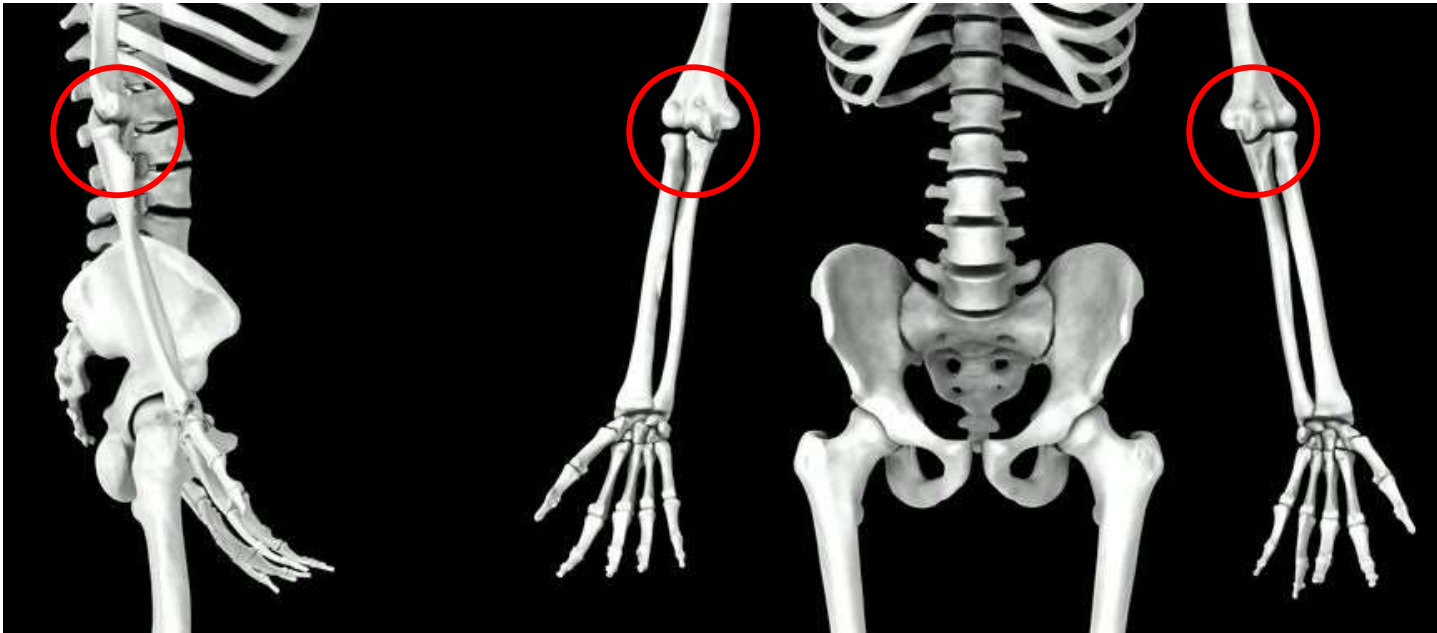


“The outer surfaces of the hand, to one inch above the wrist of both arms and including the thumb”





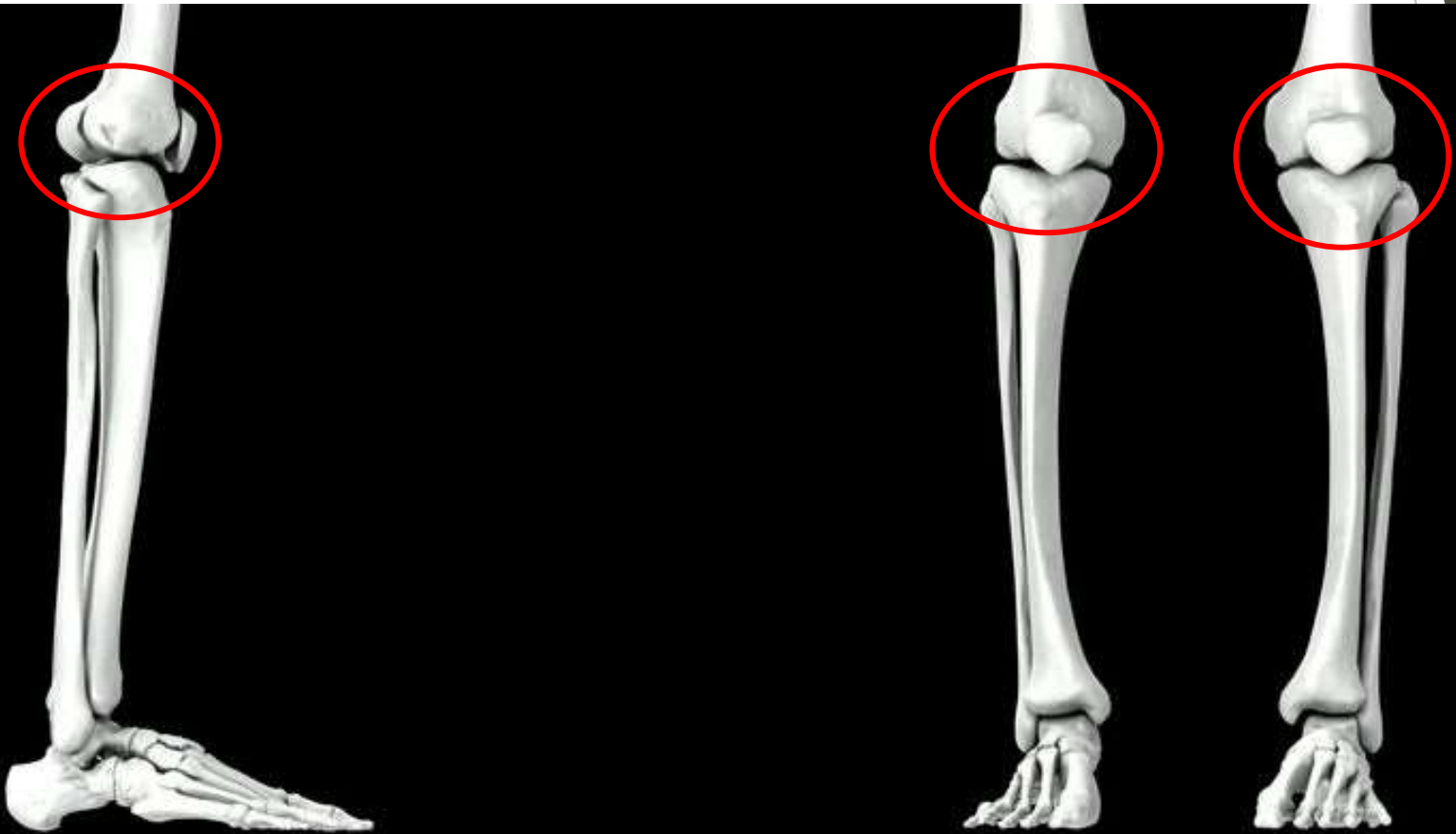
“The elbow point and bones at either side of the elbow joint”



“The elbow point and bones at either side of the elbow joint”



“The kneecap, including the area one inch (25.4 mm) above and below it, and both sides of the knee joints”



“The kneecap, including the area one inch (25.4 mm) above and below it, and both sides of the knee joints”

